



# ENVIRONMENTALLY RESPONSIBLE PRODUCTION



C E R T I F I E D  
**HIGH ENVIRONMENTAL VALUE - LEVEL 3**

DESIGNED TO SHOWCASE AGRICULTURAL OPERATIONS THAT HAVE VOLUNTARILY COMMITTED TO ENVIRONMENTALLY FRIENDLY APPROACHES.

## TREES AND HEDGES **PLANTING**

HELPS TO OFFSET OUR  
**CARBON** FOOTPRINT AND  
PROMOTE **BIODIVERSITY**.

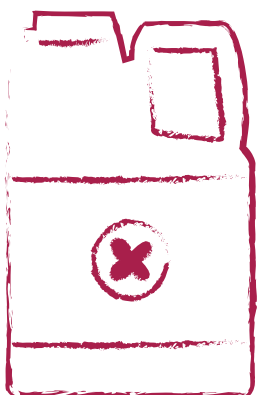


**100%**  
GREEN FERTILISER AND  
SEEDS TO FEED THE  
SOILS



## P R U D E N T

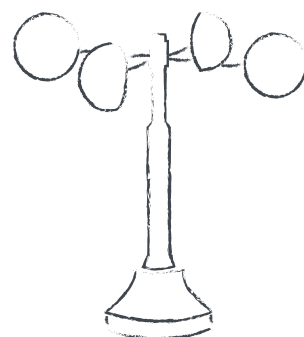
USE OF  
PLANT PROTECTION PRODUCTS



**INSECT TRAPS** ARE  
INSTALLED IN THE VI-  
NEYARD TO VERIFY THE  
PRESENCE AND/OR  
QUANTITY OF PESTS, IN  
ORDER **TO ELIMINATE**  
**UNNECESSARY**  
**TREATMENTS**.



**DUSTING** THE  
GRAPES WITH LIME  
**ABSORBS** PART OF  
THE **MOISTURE**,  
**LIMITING THE**  
**DEVELOPMENT** OF  
SOME DISEASES  
SUCH AS BOTRYTIS.



LEAF THINNING  
**100%**  
MANUAL



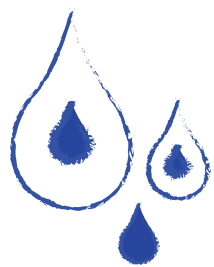
**LEAF THINNING** IMPROVES  
AERATION, STOPPING MOIS-  
TURE FROM STAGNATING ON  
THE GRAPES. LIMITS THE RISK  
OF DISEASE.

**0%**  
ANTI-BOTRYTIS

**WEATHER STATION** : HELP  
TO PREDICT THE RISK OF DI-  
SEASE (EX :MILDEW) BY RE-  
CORDING **RAINFALL AND**  
**TEMPERATURE**.

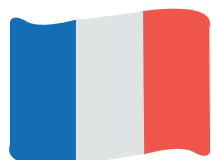
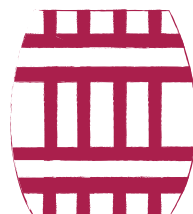
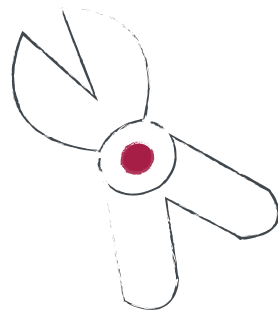
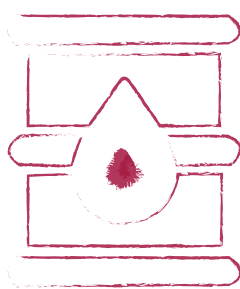
E N E R G Y  
**S A V I N G S**  
= CONSUMPTION MONITORING

(WATER, ELECTRICITY, FUEL)



HARVESTING & PRUNING

**100%**  
BY HAND

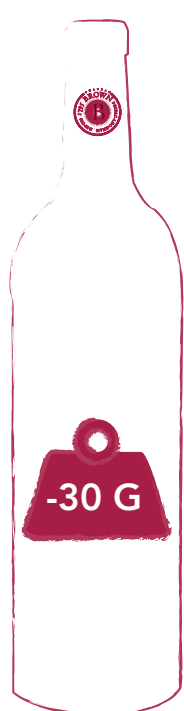


WOODEN BARRELS PURCHASED  
FROM **LOCAL COMPANIES**  
(REDUCED TRANSPORT)

## WASTE

AND EFFLUENT TREATMENT

LIGHTER BOTTLES FOR SECOND  
WINES (POMMERAIE & COLOMBIER) :  
**- 30 G GLASS**



**TOTAL SO2 (SULFITES) - PERMITTED  
(MG/L)  
BY WINE TYPE**

**CONVENTIONAL**  
200 - 150 MG/L

**ORGANIC**  
150 - 100 MG/L

**BIODYNAMIC**  
90 - 70 MG/L

**NATURAL**  
40 - 30 MG/L

**CHÂTEAU BROWN RED**  
75 - 60 MG/L **\*NB**



\* Numbers  
since the **2014**  
vintage :

2014 : 68 mg/L  
2015 : 71 mg/L  
2016 : 59 mg/L  
2017 : 66 mg/L

CO<sub>2</sub>